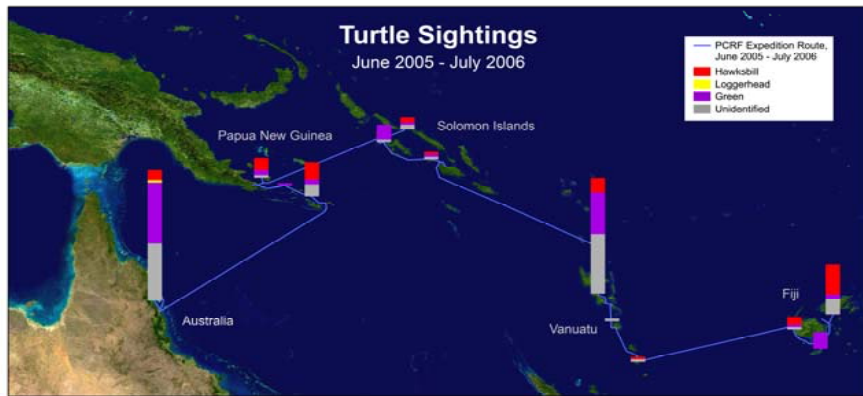


Offshore Sea Turtle Sightings in Melanesia and Australia, June 2005 to July 2006

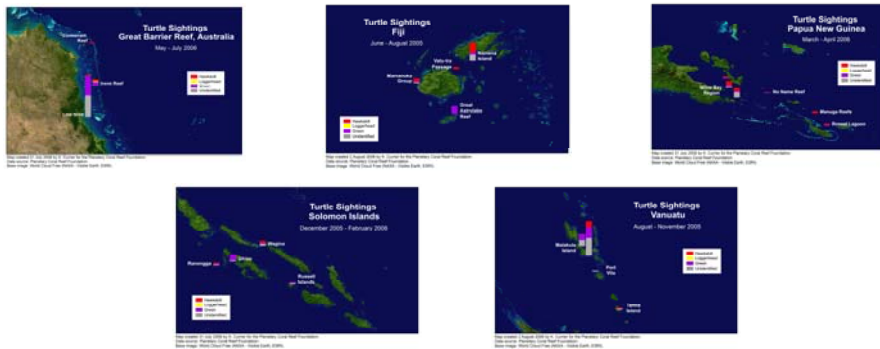
Abigail Alling, Kitty Currier, Orla Doherty, Sylvia Kowalewsky, Katie Olds, and Mark Van Thillo

Planetary Coral Reef Foundation (PCRF)



Map created 28 July 2006 by K. Currier for the Planetary Coral Reef Foundation. Data source: Planetary Coral Reef Foundation. Base image: World Cloud Free (NASA - Visible Earth, ESRI). Tabulated by sightings within a 60 nautical mile radius.

This poster illustrates sea turtle observations logged by officers onboard the Planetary Coral Reef Foundation (PCRF)'s sailing vessel while in Fiji, Vanuatu, Solomon Islands, Papua New Guinea and Australia from June 2005 through July 2006. The sightings include: 32 observations from Fiji (June – August 2005), 51 observations from Vanuatu (August – November 2005), 18 observations from the Solomon Islands (December 2005 – February 2006), 23 observations from the southern islands of Papua New Guinea (March – April 2006) and 30 observations logged off the NW Great Barrier Reef (May – July 2006). Species identified included Green Turtles, *Chelonia mydas*, Hawksbill Turtles, *Eretmochelys imbricate*, and Loggerhead Turtles, *Caretta caretta*. The sea turtle observation program has been sponsored since 2005 by Animal Alliance.



PCRF CORAL REEF MONITORING PROGRAM



Planetary Coral Reef Foundation (PCRF) has been monitoring the health and vitality of coral reefs in the Red Sea, Indian Ocean, Southeast Asia, Melanesia, Polynesia and the Great Barrier Reef since 1995. PCRF estimates that two-thirds of all reefs studied are at risk. Below are examples of the reef assessment techniques conducted at each study site. The illustrations are taken from a reef near Gizo Island, Solomon Islands, where the PCRF ship is presently conducting a fourth repeat study of the area since the recent 2007 tsunami.



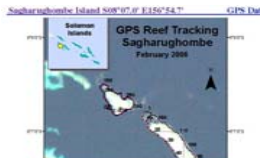
Vitareef Summary. A statistical summary using 19 codes to identify the health and vitality of minimally 2,000 coral colonies per study site.



Pointcount Summary. An assessment of ground cover recorded to the level of coral genus.



Coral and Fish ID Data. A summary of the type and number of coral and fish species found at the study site within four 20 meter 2-banded transect lines (80 m² zones).



GIS/Mapping of Reefs from Space. The precise location of the study is mapped with GPS and is also used on occasion with satellite imagery to test the ability of mapping coral reefs from space.

PCRF's scientists post 100% of its data online free of charge to encourage collaboration, and to provide a trusted source of data about turtles and remote coral reefs for users in science, education and conservation.

FOR FURTHER INFORMATION, PLEASE VISIT WWW.PCRF.ORG.

